

CASE STUDIES

Kanaka Industrial Park, Maple Ridge: Stormwater Infiltration & Attenuation

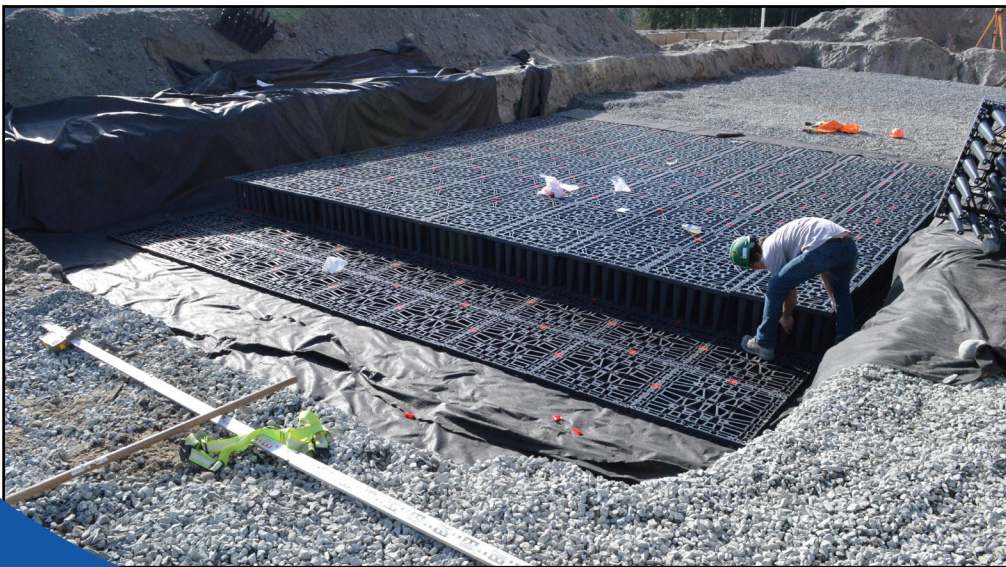


The Challenge

City grey infrastructure at capacity; the site required onsite infiltration. Located in a new industrial park that had no storm sewer.

The Solution

BARR provided an EcoBloc 17,000 gallon direct infiltration system, as specified by Vector Engineering. The system was installed under the car park to the south side of the building.



Project Team

Supplier: BARR Plastics

Engineer: Vector Engineering

Specifications

Application: Attenuation-Infiltration

Loading: 60t/HS-25

Roof size: 20,000 ft²

System Size: 76' x 23' 7"
(23.3m x 7.7m)

Volume: 17,430 USG
(62.68 m³/65,979 L)

BARR Product

Ecobloc Inspect flex



1.800.665.4499
barrplastics.com